



ADI Automated Document Inserter



Fast and efficient

Manually putting documents in boxes is a labor-intensive and error-prone process. Automatically printing and inserting documents allows improvements in lead times and overall efficiency in the packaging process.

Many types of documents can be supported. These include, packing slips, invoices, manuals, return information, and return labels. Accuracy is key, so every order is scanned to verify that the correct documents are printed and added.



Automated Document Inserter

The Automated Document Inserter (ADI) automates the addition of documents in a box. The ADI prints the documents, buffers and folds them, and automatically inserts them into the box.

- › Fully automated document feeder
- › Capacity of 700 boxes per hour
- › Automatically folded into the box
- › Order verification guarantees the right document is always in the right box
- › Implementation is fast and simple due to standard software interfaces
- › Cost effective ROI of <1 year

Technical data

General information

Ambient temperature +5°C to +40°C

Electrical connection

Connection voltage 230V AC

Pneumatic connection

Conditioning ISO8573-1:2010 (7:4:4)

Required air pressure 6-8 bar

Dimensions

Length 1824 mm

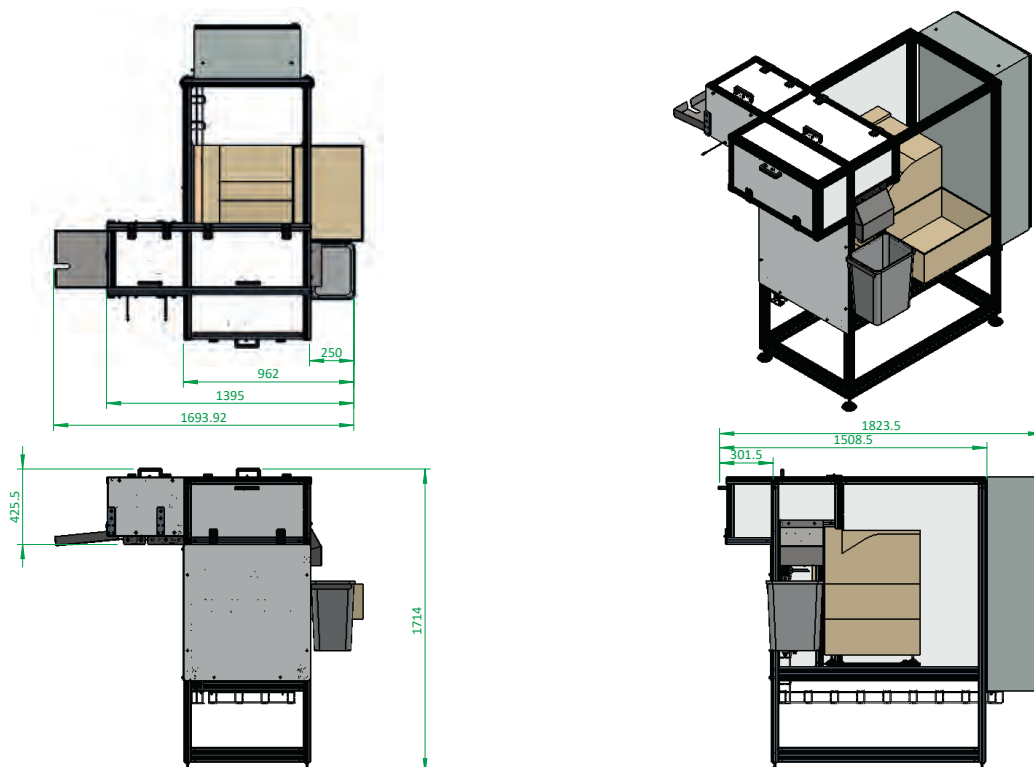
Width 1694 mm

Height 1714 mm

Height of output Variable

Capacity

Mechatronic capacity 700 boxes per hour



Inther Group

Improving intralogistics

 The Netherlands (HQ)

 Germany

 Belgium

 Moldova

 USA

› Monroe - NC

› San Francisco - CA

 China

› Shanghai

› Suzhou



info@inthergroup.com

www.inthergroup.com

INTHER
improving intralogistics