



Supplier for
intralogistics
solutions.



inthergroup.com

> Products

INTHER
improving intralogistics

Improving intralogistics

Ever-greater demands are being placed on intralogistics operations due to many factors including the increasing range and variety of stock keeping units (SKUs), handling of returns, value-added service (VAS) activities, and the scarcity of skilled labor for warehouse positions.

Thankfully, these challenges can be overcome today through the use of semi or fully automated solutions supplied by Inther Group. Since 1998 we have been developing high quality products that represent our company's commitment to efficiency and innovation in the warehouse.

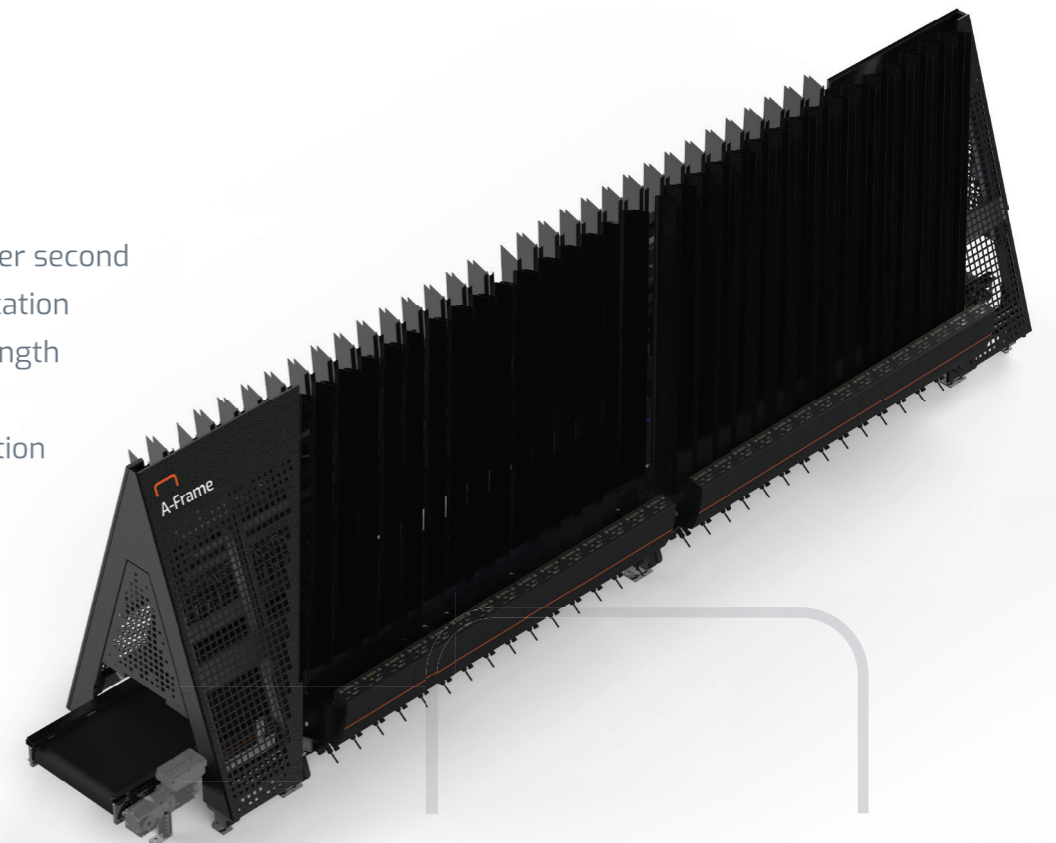


GRIPP

- › Up to 1200 products per hour
- › Flexible gripper design
- › Weight check
- › Product height detection
- › Picking angled products
- › Efficient product placement
- › Product dependant speed

A-Frame

- › Up to 1 m/s
- › Up to 5 products per second
- › Stack height verification
- › Optimal window length
- › User interface
- › Modular configuration



ADI
Automated
Document Inserter

- › Fully automated document feeder
- › Capacity of 700 boxes per hour
- › Automatically folded into the box
- › Order verification
- › Fast and simple implementation
- › Cost effective ROI of <1 year



GTP
Goods to Person

- › Ergonomic design
- › Straightforward principle
- › Optional weight check
- › Automated in and outfeed of totes



ADA
Automated
Document Applicator

- › Fully automated
- › Efficient
- › Cost effective ROI <1 year
- › Reliable
- › Environmentally friendly

CPS01
Carton Pull Sorter

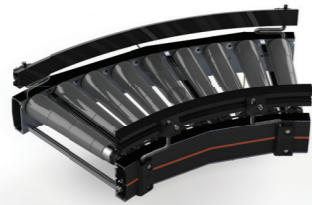
- › Completely modular
- › Ideal for small packages
- › Heavy mechanics no longer needed



CT01 Roller
Conveyor
Alignment 24V



CT01 Roller
Conveyor
Curve 24V



CT01 Roller
Conveyor
Merge 24V



CT01 Roller
Conveyor
Straight 24V



CT01 Roller
Conveyor
Straight
Accumulating
24V



CT01 Roller
Conveyor
Straight General
400V



CT01 Roller
Conveyor
Straight Non
Driven



CT02 Belt
Conveyor
Decline 400V



CT02 Belt
Conveyor
Incline 400V



KP01
Pop-up
Module 24V



KP02
Transfer
Module 24V



KP04
Liftup Gate



Inther Group

Improving intralogistics

 The Netherlands (HQ)

 Germany

 Belgium

 Moldova

 USA

› Monroe - NC

› San Francisco - CA

 China

› Shanghai

› Suzhou



info@inthergroup.com

www.inthergroup.com

IN THER
improving intralogistics